



# High Performance Point-to-Point Microwave Antennas

## HIGH-PERFORMANCE POINT-TO-POINT MICROWAVE ANTENNAS

### OVERVIEW

Trango Systems' high performance microwave dish antennas were designed for your next generation high capacity microwave networks. The low-sidelobe, deep dish, subreflector architecture boasts exceptional gain, with high front to back ratios, ETSI class 3 and FCC Cat A envelope compliance.

The flexible design supports a wide array of configurations, including:

- Direct slip-fit mount for all Trango ODUs and all outdoor radios
- 2+0/1+1 copolar direct mount with optional SMC combiner
- 2+0 dual pol/XPIC direct mount with optional direct OMC combiner
- Single and Dual pol remote mount with optional split OMC to support 4+0 all indoor systems or other radio models.

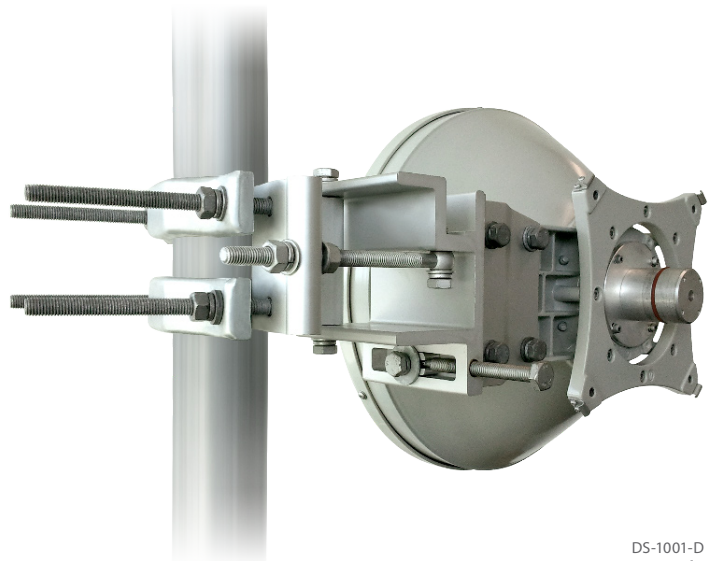
Trango antennas require minimal assembly and are easy to install and align.

### FEATURES

- Dual polarization support for greater flexibility
- Direct slip-fit mount for easy installation
- Lightweight
- Convertible to waveguide
- Support for remote mount
- Single wideband models for 6 GHz, 7/8 GHz and 23/24 GHz
- Ease-of-installation (antennas shipped completely assembled, minimal mount assembly required)\*
- Compact size with innovative feed design
- Corrosive-resistant finish
- Standard 5-year manufacturer warranty

\*6 foot antennas require minimal assembly.

GENERAL SYSTEM SPECIFICATIONS	
<i>VSWR Max. (R.L., dB)</i>	1.30:1 (17.5)
<i>Regulatory</i>	EN 302 217-4-1 EN 302 217-4-2 Class 2/3 RPE FCC Part 101 Category A (some models)
<i>X Pol. Disc.</i>	30 dB minimum
CONNECTIONS	
<i>ODU</i>	Circular Waveguide slip-fit for HP ODU connection for 7- 42 GHz. Rectangular waveguide for 6 GHz ODUs
MECHANICAL	
<i>Reflector</i>	Spun aluminum, powder coated light gray
<i>Mounting</i>	Slip-fit Latch/Strike configuration designed for HP ODU, StrataLink 24, Apex Plus, Apex Lynx and Apex Orion
ENVIRONMENTAL	
<i>Temperature Range (Operational)</i>	-45° to +60° C
<i>Temperature Range (Storage)</i>	-45° to +70° C
<i>Humidity</i>	100% Condensing
<i>Altitude</i>	4500 m (15,000 ft)
<i>Wind Velocity Operational</i>	67 mph (108 km/h)
<i>Wind Velocity Survival</i>	150 mph (241 km/h)



# Trango High Performance Antenna Specifications

Mechanical Specifications	8 in (.2 m)	1 ft (.3 m)	2 ft (.6 m)	3 ft (.9 m)	4 ft (1.2 m)	6 ft (1.8 m)
Coarse Azimuth (deg)	360	360	360	360	360	360
Fine Azimuth (deg)	+/-15	+/-15	+/-15	+/-10	+/-10	+/-5
Coarse Elevation (deg)	+/-25	+/-25	+/-25	+/-10	+/-10	+/-5
Fine Elevation (deg)	+/-15	+/-15	+/-15	+/-10	+/-10	+/-5
Mounting Pipe Diam (mm)	51-114	51-114	51-114	51-114	114	114
Mounting Pipe Diam (inch)	2.00-4.48	2.00-4.48	2.00-4.48	2.00-4.48	4.48	4.48
Side Struts (included)	0	0	0	0	1	1
Antenna Net Weight with Mount (kg)	4.5	6.9	9	26	44.5	85
Antenna Net Weight with Mount (lbs)	9.9	15.2	19.8	57.3	98.1	187.7

## Wind Loading Specifications

Wind Loading Specifications	8 in (.2 m)	1 ft (.3 m)	2 ft (.6 m)	3 ft (.9 m)	4 ft (1.2 m)	6 ft (1.8 m)
Axial Forces (N)*	196	407	1218	2605	4008	9758
Side Forces (N)*	97	201	601	1286	1978	4816
Twisting Moment (N-M)*	81	168	505	715	1759	2728

\*Wind forces at wind velocity survival rating.

## Mechanical Specifications by Model

Model	Actual Diam (m)	Actual Diam (ft)	Antenna + Mount weight (kg)	Antenna + Mount weight (lbs)	Shipping Dims (cm)	Shipping Dims (in)	Shipping Gross Weight (kg)	Shipping Gross Weight (lbs)
AD6G-2-T2	0.66	2.15	9	19.8	750 x 750 x 440	24.6 x 24.6 x 14.4	14.8	32.6
AD6G-3-T2	1.02	3.35	24	52.9	1130 x 1130 x 450	37.1 x 37.1 x 14.8	48.5	106.9
AD6G-4-T2	1.23	4.03	42	92.6	1380 x 450 x 1700	45.3 x 14.8 x 55.8	71	156.5
AD6G-6-T2	1.88	6.16	85	187.4	2100 x 570 x 2200	65.6 x 18.7 x 72.2	151	332.9
AD8G-1-T2	0.39	1.27	6.7	14.8	500 x 450 x 320	19.7 x 17.7 x 12.6	8.5	18.7
AD8G-2-T2	0.66	2.15	8.7	19.2	750 x 750 x 440	29.5 x 29.5 x 17.3	14.5	32.0
AD8G-3-T2	1.02	3.35	24	52.9	1130 x 1130 x 450	44.4 x 44.4 x 17.7	48.5	106.9
AD8G-4-T2	1.23	4.03	42	92.6	1380 x 450 x 1700	54.3 x 17.7 x 66.9	71	156.5
AD8G-6-T2	1.88	6.16	85	187.4	2100 x 570 x 2200	82.7 x 22.4 x 86.6	151	332.9
AD11G-1-T2	0.39	1.27	6.5	14.3	500 x 450 x 320	19.7 x 17.7 x 12.6	8.3	18.3
AD11G-2-T2	0.66	2.15	8.5	18.7	750 x 750 x 440	29.5 x 29.5 x 17.3	14.3	31.5
AD11G-3-T2	1.02	3.35	24	52.9	1130 x 1130 x 450	44.4 x 44.4 x 17.7	48.5	106.9
AD11G-4-T2	1.23	4.03	46	101.4	1380 x 450 x 1700	54.3 x 17.7 x 66.9	71	156.5
AD11G-6-T2	1.88	6.16	85	187.4	2100 x 570 x 2200	82.7 x 22.4 x 86.6	151	332.9
AD13G-1-T2	0.38	1.26	7.2	15.9	500 x 450 x 320	19.7 x 17.7 x 12.6	16.2	35.7
AD13G-2-T2	0.66	2.15	10.4	22.9	750 x 750 x 440	29.5 x 29.5 x 17.3	22	48.5
AD13G-3-T2	1.02	3.35	27	59.5	1130 x 1130 x 450	44.4 x 44.4 x 17.7	51.5	113.5
AD13G-4-T2	1.23	4.03	46	101.4	1380 x 450 x 1700	54.3 x 17.7 x 66.9	75	165.3
AD13G-6-T2	1.88	6.16	85	187.4	2100 x 570 x 2200	82.7 x 22.4 x 86.6	151	332.9
AD15G-1-T2	0.38	1.25	7.1	15.7	500 x 450 x 320	19.7 x 17.7 x 12.6	8.9	19.6
AD15G-2-T2	0.66	2.17	10.2	22.5	750 x 750 x 440	29.5 x 29.5 x 17.3	15.9	35.1
AD15G-3-T2	1.02	3.35	27	59.5	1130 x 1130 x 450	44.4 x 44.4 x 17.7	51.5	113.5
AD15G-4-T2	1.23	4.03	46	101.4	1380 x 450 x 1700	54.3 x 17.7 x 66.9	75	165.3
AD15G-6-T2	1.88	6.16	85	187.4	2100 x 570 x 2200	82.7 x 22.4 x 86.6	151	332.9
AD18G-1-T2	0.38	1.25	6.9	15.2	500 x 450 x 320	19.7 x 17.7 x 12.6	8.7	19.2
AD18G-2-T2	0.66	2.17	9.7	21.4	750 x 750 x 440	29.5 x 29.5 x 17.3	15.5	34.2
AD18G-3-T2	1.02	3.35	26	57.3	1130 x 1130 x 450	44.4 x 44.4 x 17.7	50.5	111.3
AD18G-4-T2	1.23	4.03	44.5	98.1	1380 x 450 x 1700	54.3 x 17.7 x 66.9	73.5	162.0
AD18G-6-T2	1.88	6.16	85	187.4	2100 x 570 x 2200	82.7 x 22.4 x 86.6	151	332.9
AD23G-0-T2	0.26	0.86	4.5	9.9	445 x 320 x 270	17.5 x 12.6 x 10.6	6.2	13.7
AD23G-1-T2	0.38	1.23	6.9	15.2	500 x 450 x 320	19.7 x 17.7 x 12.6	8.7	19.2
AD23G-2-T2	0.66	2.15	9	19.8	750 x 750 x 440	29.5 x 29.5 x 17.3	14.8	32.6
AD23G-3-T2	1.02	3.35	26	57.3	1130 x 1130 x 450	44.4 x 44.4 x 17.7	50.5	111.3
AD23G-4-T2	1.23	4.03	44.5	98.1	1380 x 450 x 1700	54.3 x 17.7 x 66.9	73.5	162.0
AD23G-6-T2	1.88	6.16	85	187.4	2100 x 570 x 2200	82.7 x 22.4 x 86.6	151	332.9
AD26G-1-T2	0.39	1.27	6.8	15.0	500 x 450 x 320	19.7 x 17.7 x 12.6	8.6	19.0
AD26G-2-T2	0.67	2.19	8.8	19.4	750 x 750 x 440	29.5 x 29.5 x 17.3	14.6	32.2
AD26G-3-T2	1.02	3.35	26	57.3	1130 x 1130 x 450	44.4 x 44.4 x 17.7	50.5	111.3
AD26G-4-T2	1.23	4.03	44.5	98.1	1380 x 450 x 1700	54.3 x 17.7 x 66.9	73.5	162.0
AD28G-1-T2	0.39	1.27	6.7	14.8	500 x 450 x 320	19.7 x 17.7 x 12.6	8.1	17.9
AD28G-2-T2	0.67	2.19	8.8	19.4	750 x 750 x 440	29.5 x 29.5 x 17.3	14.6	32.2
AD32G-1-T2	0.38	1.23	6.5	14.3	500 x 450 x 320	19.7 x 17.7 x 12.6	8.1	17.9
AD32G-2-T2	0.66	2.15	8.8	19.4	750 x 750 x 440	29.5 x 29.5 x 17.3	14.5	32.0
AD38G-1-T2	0.38	1.23	6.2	13.7	500 x 450 x 320	19.7 x 17.7 x 12.6	8	17.6
AD38G-2-T2	0.66	2.15	8.7	19.2	750 x 750 x 440	29.5 x 29.5 x 17.3	14.5	32.0
AD42G-1-T2	0.38	1.23	6.5	14.3	500 x 450 x 320	19.7 x 17.7 x 12.6	8	17.6
AD42G-2-T2	0.66	2.15	9	19.8	750 x 750 x 440	29.5 x 29.5 x 17.3	14.5	32.0

# Performance Specifications by Model

Model	FCC Category	ETSI Class	Low	Mid	High	Beamwidth (3 dB)	F/B (dB)	Low Freq	High Freq
AD6G-2-T2	-	3	28.1	29.6	30.6	5.3	55	5.925	7.125
AD6G-3-T2	B2	3	31.6	32.5	33.2	3.6	59	5.925	7.125
AD6G-4-T2	B2	3	35	35.6	36.2	2.5	62	5.925	7.125
AD6G-6-T2	A	3	38.5	39.4	39.8	1.7	65	5.925	7.125
AD8G-1-T2	-	3	24.6	26.1	27.2	7.5	51	7.125	8.5
AD8G-2-T2	-	3	29.6	31.1	32.2	4.7	57	7.125	8.5
AD8G-3-T2	-	3	34	34.8	35.5	3	60	7.125	8.5
AD8G-4-T2	-	3	36.8	37.3	37.7	2.2	63	7.125	8.5
AD8G-6-T2	-	3	40.1	40.8	41.1	1.5	67	7.125	8.5
AD11G-1-T2	-	3	28.7	29.4	30	5.5	55	10.125	11.7
AD11G-2-T2	B	3	33.8	34.5	35.2	3.3	61	10.125	11.7
AD11G-3-T2	B	3	36.9	37.6	38.2	2.1	63	10.125	11.7
AD11G-4-T2	A	3	40.2	40.7	41	1.5	67	10.125	11.7
AD11G-6-T2	A	3	42.7	43.5	44.4	1.1	70	10.125	11.7
AD13G-1-T2	-	3	30.8	30.9	31	4.7	57	12.75	13.25
AD13G-2-T2	-	3	35.8	36	36.2	2.7	62	12.75	13.25
AD13G-3-T2	-	3	39	39.2	39.3	1.8	64	12.75	13.25
AD13G-4-T2	-	3	41.9	42	42.1	1.3	68	12.75	13.25
AD13G-6-T2	-	3	44.8	45.2	45.5	0.9	72	12.75	13.25
AD15G-1-T2	-	3	31.6	32.1	32.6	4.3	58	14.4	15.35
AD15G-2-T2	-	3	36.5	36.8	37.2	2.5	65	14.4	15.35
AD15G-3-T2	-	3	40.1	40.3	40.6	1.6	67	14.4	15.35
AD15G-4-T2	-	3	42.7	42.9	43.1	1.2	71	14.4	15.35
AD15G-6-T2	-	3	45.9	46.2	46.5	0.8	74	14.4	15.35
AD18G-1-T2	B2	3	33.6	34.2	34.5	3.3	60	17.7	19.7
AD18G-2-T2	A	3	38.4	38.9	39.1	2.1	67	17.7	19.7
AD18G-3-T2	A	3	41.8	42.3	42.8	1.2	70	17.7	19.7
AD18G-4-T2	A	3	44.2	44.7	45.1	0.9	73	17.7	19.7
AD18G-6-T2	A	3	47	47.8	48.4	0.7	76	17.7	19.7
AD23G-0-T2	B2	3	30.5	31.1	31.5	4.1	56	21.1	24.5
AD23G-1-T2	A	3	34.7	35.4	36.1	3	60	21.1	24.5
AD23G-2-T2	A	3	40	40.6	41.2	1.7	63	21.1	24.5
AD23G-3-T2	A	3	43.4	44	44.7	1	67	21.1	24.5
AD23G-4-T2	A	3	46	46.6	47.1	0.8	74	21.1	24.5
AD23G-6-T2	A	3	48.9	49.6	50.1	0.5	79	21.1	24.5
AD26G-1-T2	-	3	35.7	36.4	38.1	2.3	63	24.25	26.5
AD26G-2-T2	-	3	40.6	41.5	42.5	1.1	68	24.25	26.5
AD26G-3-T2	-	3	44.6	45	45.3	1	70	24.25	26.5
AD26G-4-T2	-	3	47	47.4	47.8	0.6	75	24.25	26.5
AD28G-1-T2	-	3	37.6	38.1	38.6	2.2	63	27.5	29.5
AD28G-2-T2	-	3	42.3	42.6	43	1.2	68	27.5	29.5
AD32G-1-T2	-	3	38.7	38.9	39.1	1.8	58	31.8	33.4
AD32G-2-T2	-	3	43.2	43.5	43.8	1	61	31.8	33.4
AD38G-1-T2	A	3	39.6	40.1	40.5	1.6	61	37	40
AD38G-2-T2	A	3	44.6	45.2	45.8	0.9	64	37	40
AD42G-1-T2	-	3	40.4	40.8	41.1	1.5	60	40.5	43.5
AD42G-2-T2	-	3	45.7	46	46.3	0.8	65	40.5	43.5



©2013 Trango Systems, Inc. All rights reserved. Trango and TrangoLINK are registered trademarks of Trango Systems, Inc. All other marks are the property of their respective owners. Trango continually improves products as new technologies and components become available. Trango, therefore, reserves the right to change specifications without prior notice. All features, functions and operations described herein may not be marketed in all parts of the world. Consult your Trango representative for further information.

